

DPOK, Inc. area Service Providers

Advocate Care Services, Inc.
151 S. Whittier, Ste. 1500
Wichita, KS 67207
Tel (316) 260-9910
www.advocatecare.org

Angel Square
917 ½ E 7th
Concordia, KS 66901
Tel (785) 243-2262

Another Day, Inc.
111802 W 77th
Lenexa, KS 66214
Tel (913) 599-2221
Toll (866) 599-2211
www.anotherday.info

Accessible Home Health
PO Box 942
Salina, KS 67402-0942
Tel (785) 493-0340
Toll (888) 464-6521

Choices Network, Inc.
2151 Centennial Rd.
Salina, KS 67401
Tel (785) 820-8018
Toll (800) 690-4280
www.choicesnetwork.net

Enrichment Services of Kansas, Inc.
2439 Robin Rd.
Salina, KS 67401
Tel (785) 643-4740

Helpers, Inc.
15540 Pflumm
Olathe, KS 66062
Tel (913) 322-7212
Toll (877) 285-7603
www.helpersinc.org

Home Health Agency of Dickinson Co.
511 NE 10th St. (Lifeline)
Abilene, KS 67410
Tel (785) 263-6630

Independent Connection, Inc.
1710 W. Schilling Rd.
Salina, KS 67401
(785) 452-9580
Toll (800) 526-9731
www.indconnectinc.com

Life Patterns, Inc.
3625 SW 29th, Ste 202
Topeka, KS 66614
Tel (785) 273-7189
www.lifepatternsks.org

LINK, Inc.
2401 E. 13th St.
Hays, KS 67601
Tel (785) 625-6942
www.linkinc.org

MedScope America Corporation
222 W. Lancaster Avenue
Paoli, PA 19301
Toll (800) 645-2060
www.medscope.org

Mosaic of Ellsworth
124 W 3rd
Ellsworth, KS 67439
Tel (785) 472-4081
www.mosaicinellsworth.org

OCCK, Inc.
1710 W Schilling Road
Salina, KS 67401
Tel (785) 827-9383
www.occk.com

Resource Center for Independent Living
1137 Laing
Osage City, KS 66523
Tel (785) 528-3105
Toll (800) 580-7245
www.rclinc.org

Rosewood Services, Inc.
P.O. Box 1321
384 N. Washington
Great Bend, KS 67530
Tel (620) 793-5888
www.rosewoodservices.com

S & S Drug Company, Inc.
113 S Mill Street
Beloit, KS 67420
Tel (785) 738-2287
Toll (800) 222-3585
www.sandsdrug.com

Salina Regional Health Center
520 S. Santa Fe, Suite 140 (Lifeline)
Salina, KS 67401
Tel (785) 823-8770
www.srhc.com

Salina-Saline County Health Department
125 West Elm
Salina, KS 67401
Tel (785) 826-6600
www.sschd.org

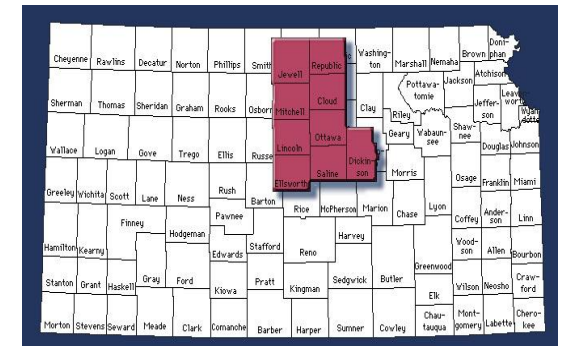
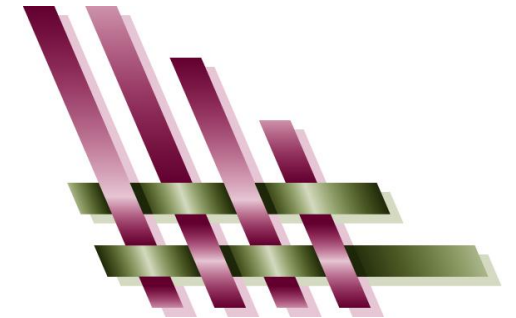
Shady Cottage
1411 17th Street
Belleville, KS 66935
Tel (785) 527-2650

Sunflower Adult Day Services
401 W Iron
Salina, KS 67401
Tel (785) 823-6666
www.sunfloweradulday.org

Disability Planning Organization of Kansas, Inc. with the cooperation of its Providers, tries to maintain the most current information available. We encourage you to contact **ALL** the listed providers for the services you are seeking. Addresses may be misleading; they may already offer or be willing to offer services in your area.

October 2018

DPOK, Inc. Services Guide



**Disability Planning Organization
of Kansas, Inc.**
119 W Iron Ave, 4th Floor
PO Box 1067
Salina, KS 67402-1067
785-823-3173
866-886-3765
www.dpok.com

Targeted Case Management

Case Managers help the person and their support network navigate the world of services and supports. They can help identify, select, obtain, and coordinate paid and unpaid services to enhance the person's independence, integration, and productivity by using their Person Centered Support Plan as a guide.

Choices Network, Inc.
Mosaic
OCCK, Inc.
Rosewood Services, Inc.

Day

These daytime services are structured activities; which may include workplace training, socialization, recreation, and community inclusion. Participation in these services helps a person develop a sense of personal contribution, accomplishment or compensation.

Angel Square (adults only)
Choices Network, Inc.
Enrichment Services of Kansas, Inc.
Mosaic
OCCK, Inc.
Shady Cottage (Republic & Cloud Co. only)
Sunflower Adult Day Services
Rosewood Services, Inc.

Supported Employment

Ongoing support services to sustain paid employment in a job site integrated with a general work force. May include assessment, job placement, on the job training in work and work related skills and monitoring to assure job retention.

Mosaic
OCCK, Inc.
Shady Cottage
Rosewood Services, Inc.



Providers of each service are listed in purple under the service description.

Residential

These licensed services help persons with their daily living needs. They address the person's independence, adaptive needs, integration, and participation in the community. Requirements vary for the residential home depending on the individual receiving services & their age.

Overnight Respite for relief to family for overnight. Planned in segments and time limited.

Angel Square (adult only)
Choices Network, Inc.
Enrichment Services of Kansas, Inc.
Mosaic
OCCK, Inc.
Shady Cottage (Republic & Cloud Co. only)
Rosewood Services, Inc.



Agency-directed Personal Care Services

An agency-directed attendant care service supporting daily living needs of individuals (children or adults) living in their family home. Services occur at home or in the community assisting the individual. Services might include direct assistance with health care needs, self care activities or tasks promoting independence, productivity, and community integration. Attendant care workers are employed, trained and supervised by the agency chosen.

Overnight Respite for relief to family for overnight. Planned in segments and time limited

Enhanced Care Services is overnight assistance for repositioning nighttime medication and/or other medically necessary supports.

Supportive Home Care (SHC) is provided by an agency to assist a person living with someone meeting the definition of family OR in one of the following settings: A setting where a child, 5 to 21 yrs. of age is in the custody of DCF but not living with someone meeting the definition of family, or a setting in which a child, 15 yrs. of age or older, resides with a person who does not meet the definition of family and who has not been appointed the legal guardian or custodian.

Home Health Agency of Dickinson County
OCCK, Inc.
Salina/Saline County Health Dept.
Shady Cottage
Rosewood Services, Inc.

Self-directed Personal Care Services

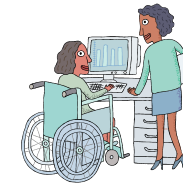
A self-directed service* offering personal care on a one-to-one basis to ensure the health and welfare of the individual. Support with the tasks the person would typically do for themselves or by themselves, if they did not have a disability. Such services occur at home or in the community assisting the individual. Services might include direct assistance with health care needs, self care activities or tasks promoting independence, productivity, and community integration. Personal Care Services is available to individuals who live in a home of their own or a family home.

Overnight Respite for relief to family for overnight. Planned in segments and time limited.

Enhanced Care Services is overnight assistance for repositioning nighttime medication and/or other medically necessary supports.

***For additional information about Self Directing Services see "Self Direction" brochure.**

Advocate Care Services, Inc.
Another Day, Inc.
Choices Network, Inc.
Helpers, Inc.
Life Patterns, Inc.
LINK, Inc.
OCCK, Inc.
Resource Center for Independent Living, Inc.
Advocate Care Services, Inc.
Rosewood Services, Inc.



Wellness Monitoring

A registered nurse will visit the individual's home to evaluate the level of wellness of the individual to determine if medical services recommended by a physician are being utilized properly and if the health of the individual is allowing them to remain in their home without more frequent skilled nursing intervention. Visits are limited to once every 60 days. Assistance is offered in orientation to surroundings, adjustment to medication, personal hygiene and monitoring of vitals.

Mosaic
OCCK, Inc.
Accessible Home Health
Rosewood Services, Inc.
Home Health Agency of Dickinson County

Specialized Medical Care

Long-term nursing support provided to individuals who are medically fragile or technology dependent. The ongoing medical needs of the individual must be met to ensure the person can live outside of a hospital or ICF/MR. Providers of this service must be employed or supervised by a Home Health Agency, be an RN or LPN and be trained with the medical skills necessary to care for and meet the medical needs of the individual.

Accessible Home Health
Life Patterns, Inc. (self – directed only)

Medical Alert Rental (aka Life Line)

This is provided to individuals who have a medical need that could become critical at any time. Medical alert devices are a small instrument carried or worn by the individual, which, by the push of a button, automatically dials the telephone to a responder network.

Salina Regional Health Center - Lifeline
Home Health & Hospice of Dickinson Co.
MedScope America Corp.

Assistive Services

- Home Modifications/Equipment – A service providing equipment, modifications or improvements to an individual's living environment to permit them to remain in their home and ensure safety, security and accessibility.
- Van Lifts – Vehicle modification provided for safe transportation to help an individual be involved in their community.
- Wheelchair Modifications – This service provides necessary modifications to wheelchairs of adults 21 years of age and older to promote health, well-being and independence.

Independent Connection, Inc.
DPOK, Inc. sub-contracting with vendors/ builders
OCCK, Inc.
S & S Drug Company, Inc. (Mitchell, Ottawa, Republic, Lincoln, Cloud & Jewell Co. – durable medical equipment)
LINK, Inc.
Resource Center for Independent Living, Inc.